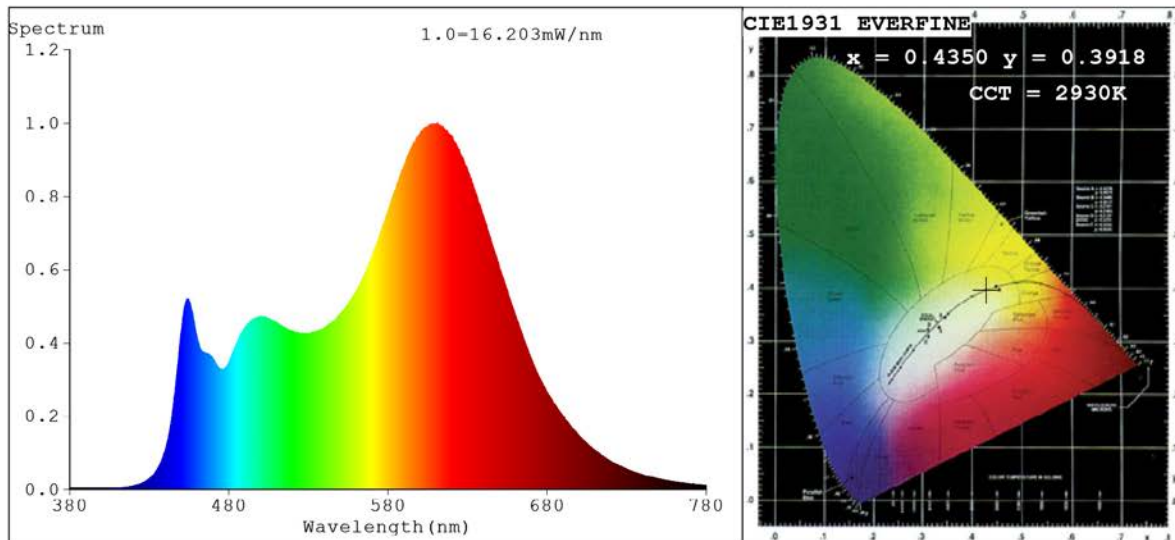


## Spectrum Test Report



### Color Parameters:

Chromaticity Coordinate:  $x=0.4350$   $y=0.3918$   $u'=0.2547$   $v'=0.5161$   
 CCT=2930K (Duv=-0.0047) Dominant WL:  $\lambda_d = 585.0\text{nm}$  Purity=48.1%  
 Ratio: R=25.3% G=70.4% B=4.2%; Peak WL:  $\lambda_p = 611.1\text{nm}$  FWHM=104.4nm  
 Render Index: Ra=86.0 CRI=83.6 TM30: Rf=85 Rg=96  
 R1 =94 R2 =94 R3 =82 R4 =90 R5 =97 R6 =85 R7 =79  
 R8 =67 R9 =37 R10=86 R11=95 R12=76 R13=98 R14=90 R15=86

### Photo Parameters:

Flux = 730.2 lm Eff. : 71.28 lm/W Fe = 2.372 W

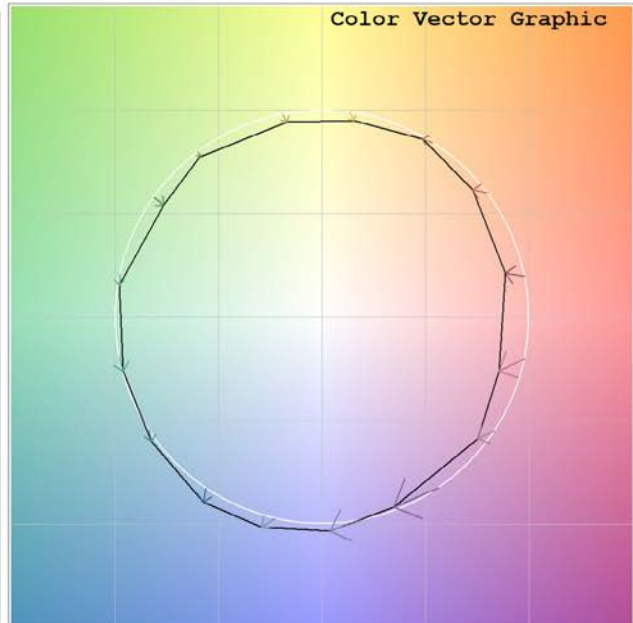
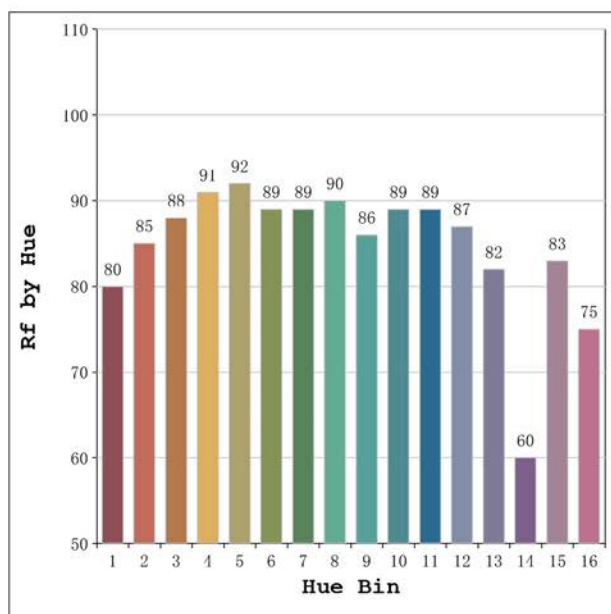
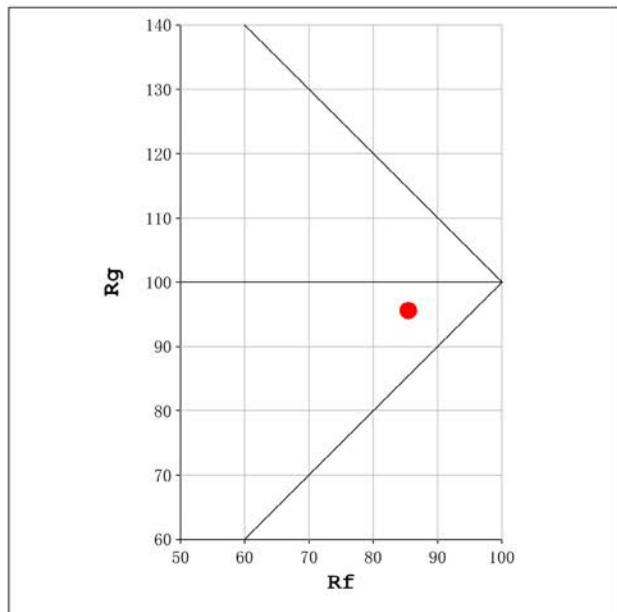
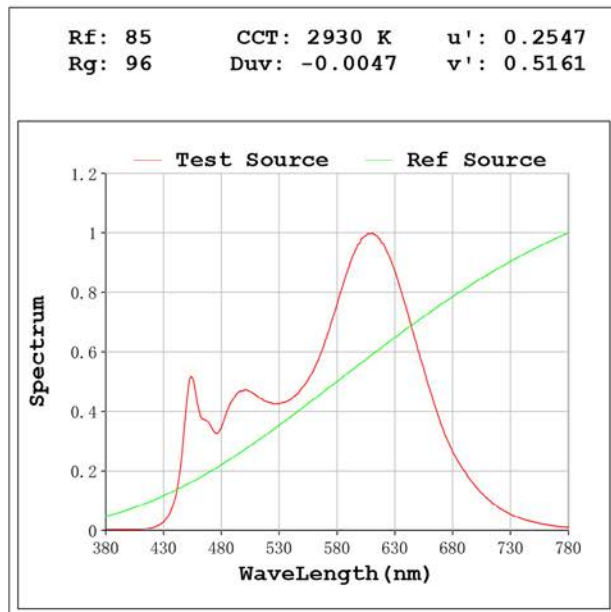
### Electrical parameters:

V = 23.998 V I = 0.4269 A P = 10.24 W PF = 1.000

Status: Integral T = 1520 ms Ip = 48781 (74%)

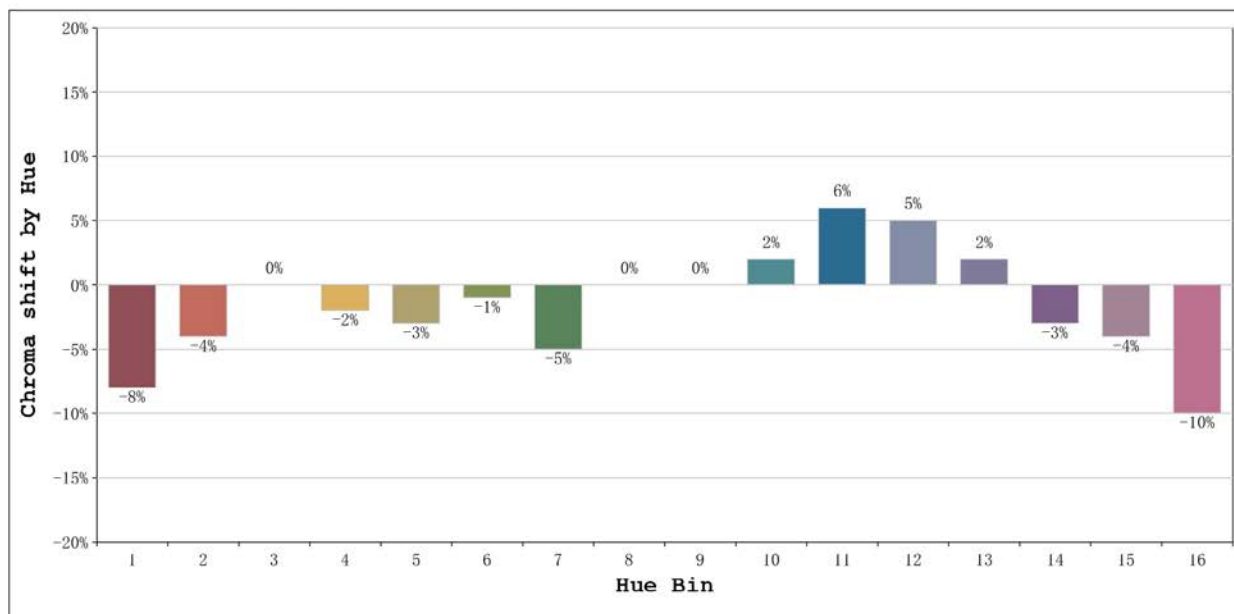
Model: Ecoled Vizcaya pro 3000K  
 Tester: Sergio Carneros  
 Temperature: 27Deg  
 Manufacturer: Luz Negra S.L

Number: 33.205  
 Date: 2024-01-16 15:50:23  
 Humidity: 40%  
 Remarks: tira flexible de 100cm



Model:Ecoled Vizcaya pro 3000K  
 Tester:Sergio Carneros  
 Temperature:27Deg  
 Manufacturer:Luz Negra S.L

Number: 33.205  
 Date:2024-01-16 15:50:23  
 Humidity:40%  
 Remarks:tira flexible de 100cm



			Graphic shift(%)	
Hue Bin	Hue Angle	Rf	Chroma	Hue
1	0.0° - 22.5°	80	-8	3
2	22.5° - 45.0°	85	-4	5
3	45.0° - 67.5°	88	0	5
4	67.5° - 90.0°	91	-2	-2
5	90.0° - 112.5°	92	-3	0
6	112.5° - 135.0°	89	-1	1
7	135.0° - 157.5°	89	-5	1
8	157.5° - 180.0°	90	0	5
9	180.0° - 202.5°	86	0	7
10	202.5° - 225.0°	89	2	5
11	225.0° - 247.5°	89	6	3
12	247.5° - 270.0°	87	5	-4
13	270.0° - 292.5°	82	2	-15
14	292.5° - 315.0°	60	-3	-23
15	315.0° - 337.5°	83	-4	-7
16	337.5° - 360.0°	75	-10	-8

Model:Ecoled Vizcaya pro 3000K  
Tester:Sergio Carneros  
Temperature:27Deg  
Manufacturer:Luz Negra S.L

Number: 33.205  
Date:2024-01-16 15:50:23  
Humidity:40%  
Remarks:tira flexible de 100cm